

Cambria Road, Brixton, SE5

1 bedroom flat for sale

£450,000

Leasehold

Property Details

A stylish one double bedroom garden flat with a garden studio, two minutes from Loughborough Junction and within easy reach of all that Brixton has to offer. The double bedroom at the front of the property is a generous size, whilst the spacious bathroom is modern and luxurious. At the rear of the property is the real icing on the cake: a wonderfully bright and spacious open plan kitchen and reception room, leading onto the decked garden. A highlight feature is the studio at the end of the garden which is perfect for working from home. All in all this is a gem of a flat in an ideal location.

Features

- Private garden
- Chain free
- Recently redecorated
- Light and airy
- Garden office
- Close to ruskin park

Council tax band C

EPC rating C (72)



Cambria Road, Brixton, SE5



1 Bed flat

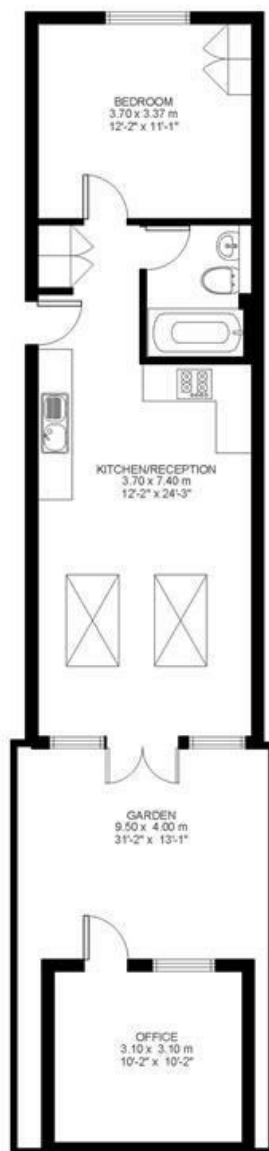
Approx internal area:

598 sqft 56 sqm

INCLUDING OFFICE

While we do try our very best, floor plans are produced as a guide only and we take no responsibility for the precise accuracy with which any property is represented

Cambria Road



Ground Floor



Cambria Road, Brixton, SE5

